



KONGSBERG

Connectivity and Autonomous functions

Erlend Vågsholm – Kongsberg Seatex

IOGP Stavanger 27.04.2017

PROVIDING ADVANCED SOLUTIONS FOR EXTREME PERFORMANCE UNDER EXTREME CONDITIONS



KONGSBERG MARITIME

Global market leader within both offshore and merchant marine applications

KONGSBERG SEATEX



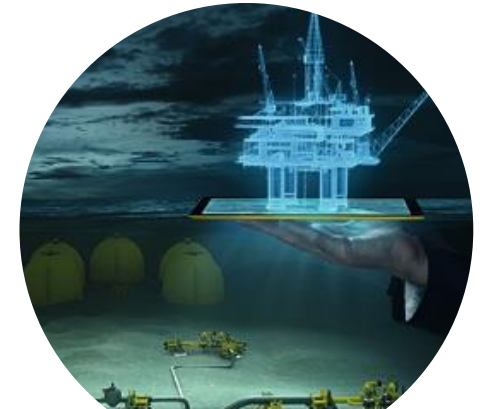
KONGSBERG DEFENCE SYSTEMS

Modern product portfolio in growing defence and aerospace niches



KONGSBERG PROTECH SYSTEMS

Unrivalled global market leader in remote weapon stations



KONGSBERG DIGITAL

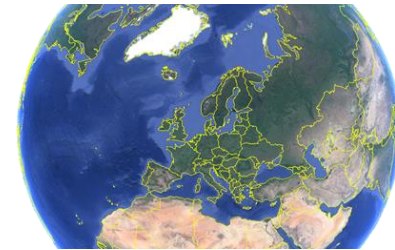
Simulation, Renewables, Artificial Intelligence, Cyber security....



KONGSBERG

Kongsberg Seatex

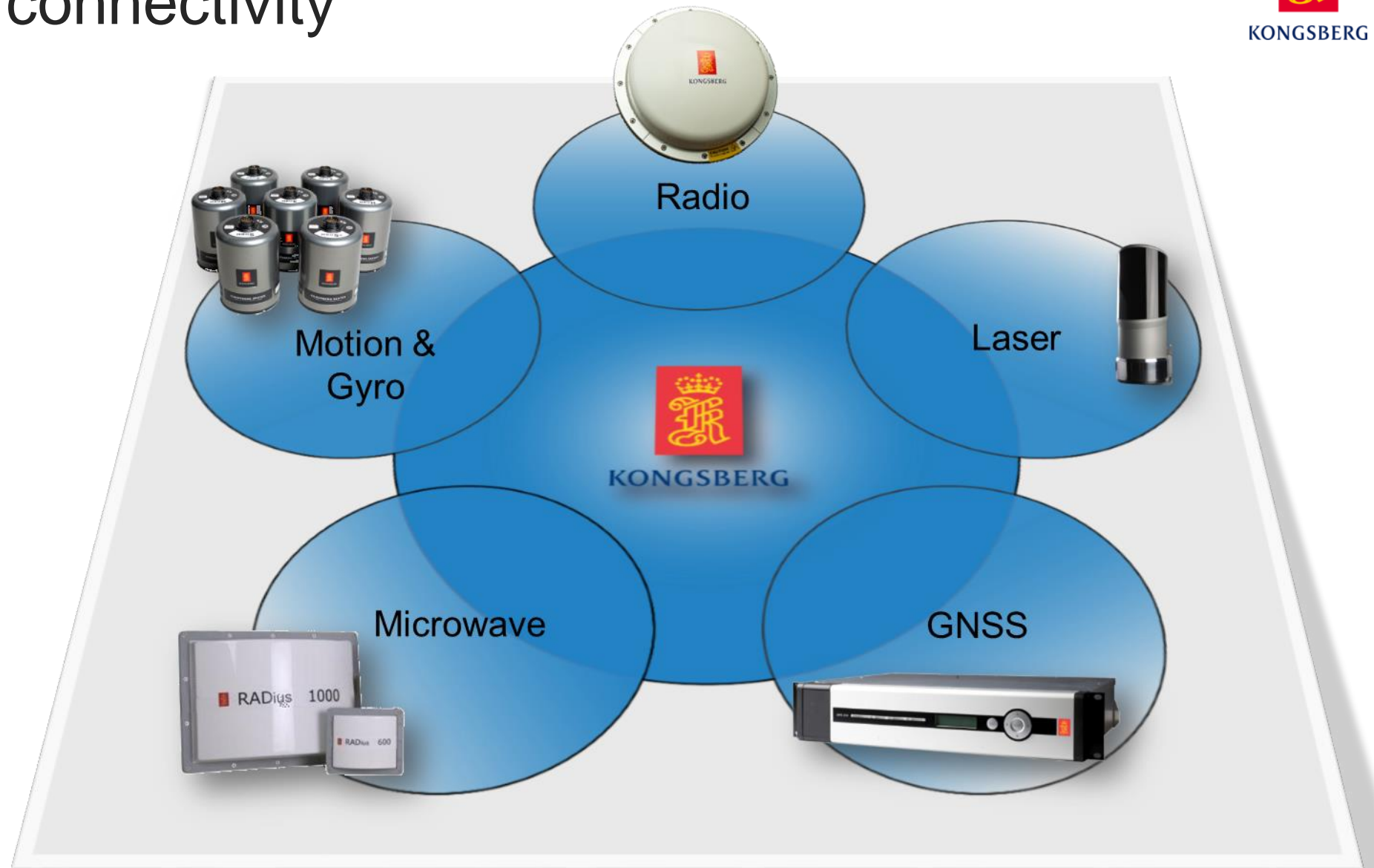
Where we are



KONGSBERG SEATEX - Technology strategy



Sensors and connectivity



eBird



Seatrack – surface position buoy



An aerial photograph of a body of water with a rocky coastline on the right. Several ships are scattered across the water. A network of glowing cyan lines connects these ships, illustrating a connectivity or communication network. One ship at the top left is connected to a ship at the bottom center, and another at the bottom center is connected to a ship on the right. A long line also extends from the top ship towards the right edge of the frame.

Connectivity



KONGSBERG

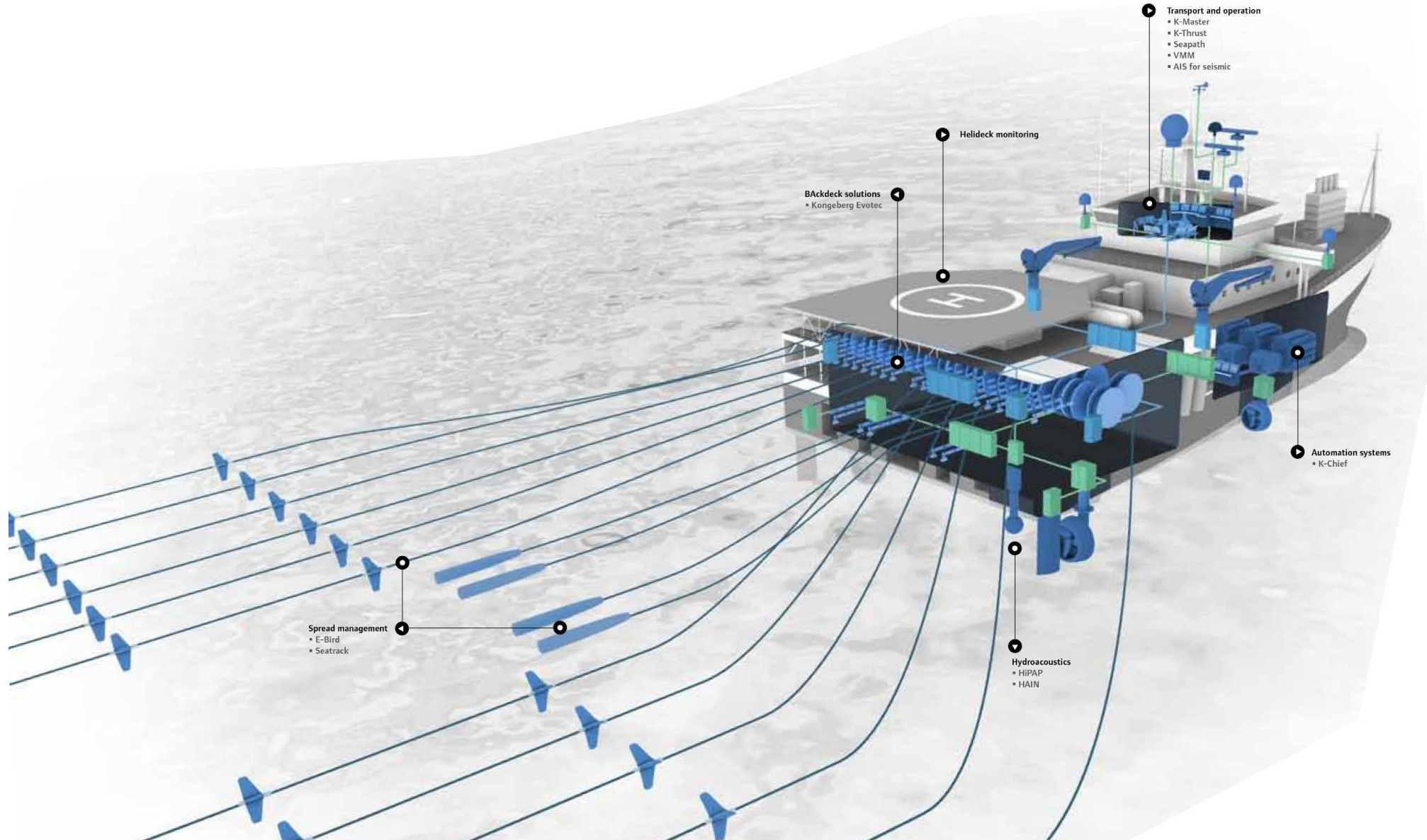
CUSTOMER SUPPORT - FOLLOW THE SUN

17.000+ VESSELS

Connecting systems onboard

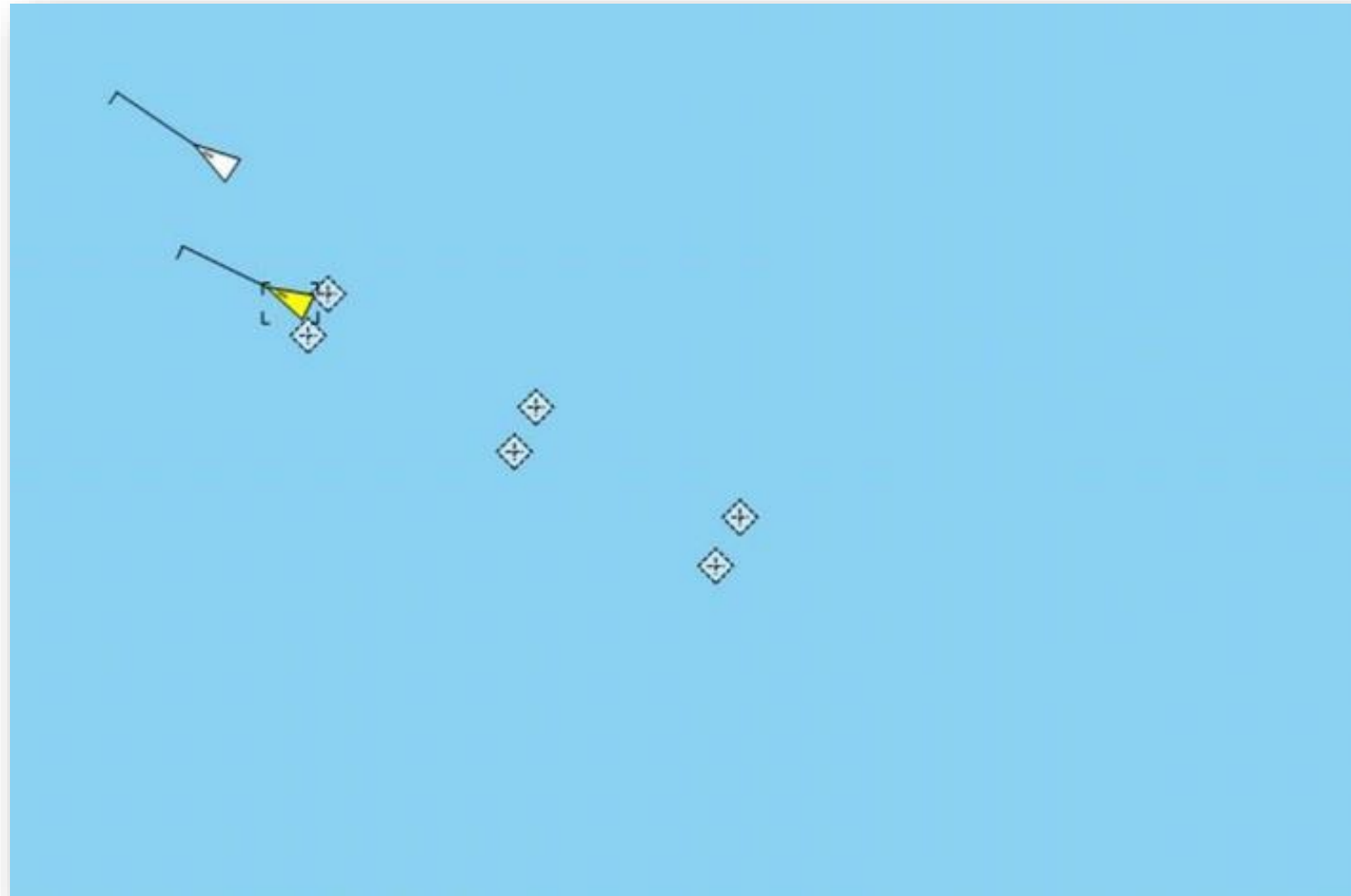


KONGSBERG





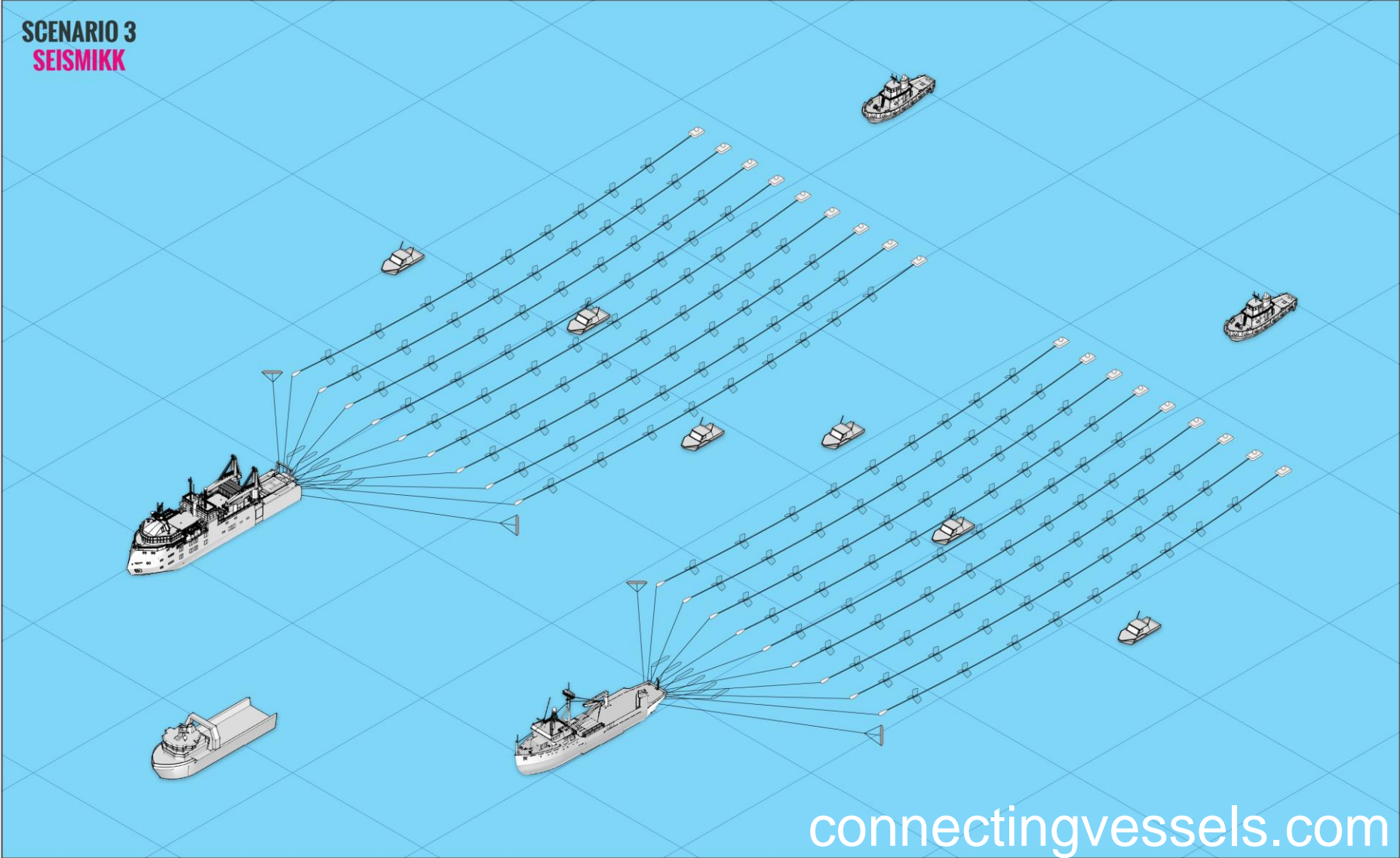
AIS 300S



Connecting vessels



KONGSBERG



connectingvessels.com



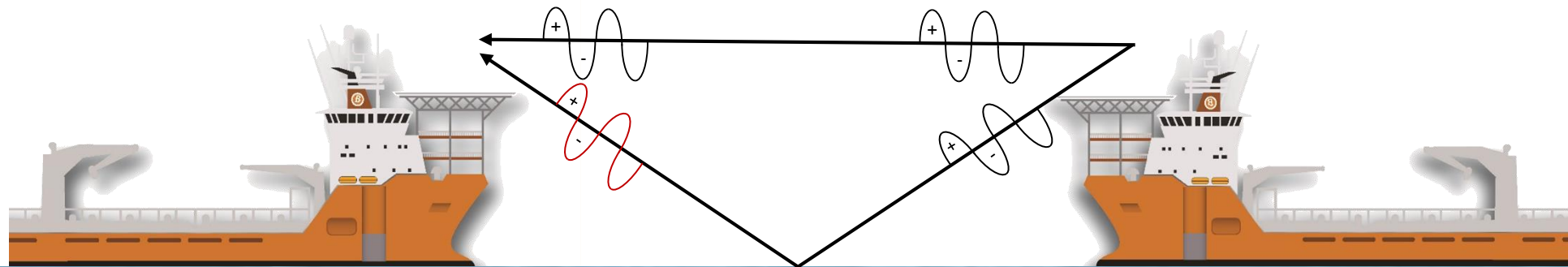
Requirements to the communication system

- be reliable
- handle maritime environment
- be able to communicate with vessels near as well as far
- maintain link when signal path is obstructed
- be easy to operate and install
- Existing broadband communication systems...
 - high throughput, but are not reliable
 - does not handle long range
 - needs tuning and adjustments in order to operate
 - Too high latency for real time sensor data

Maritime Communication

Problem

- Multipath
- Flat sea fading



KONGSBERG

Maritime Communication

Problem

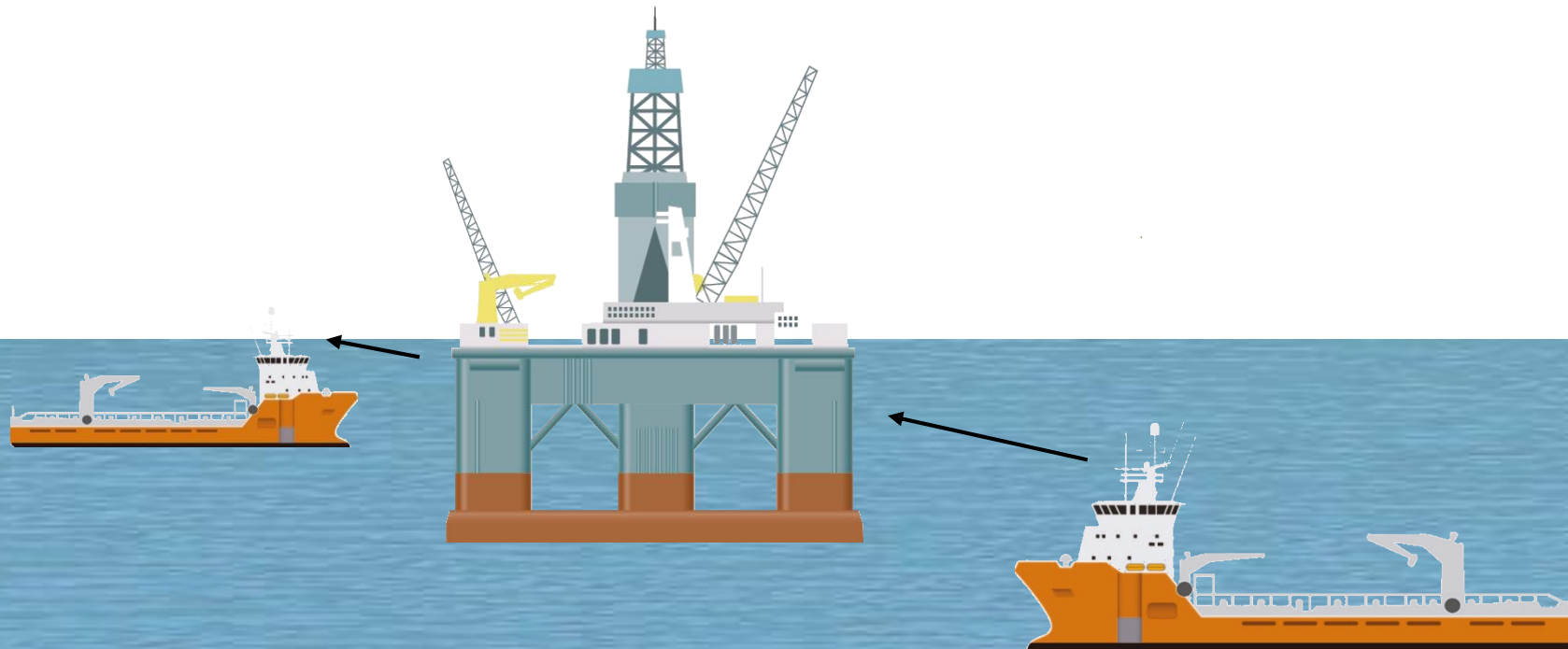
- Near and far communication
- Communication beyond line of sight



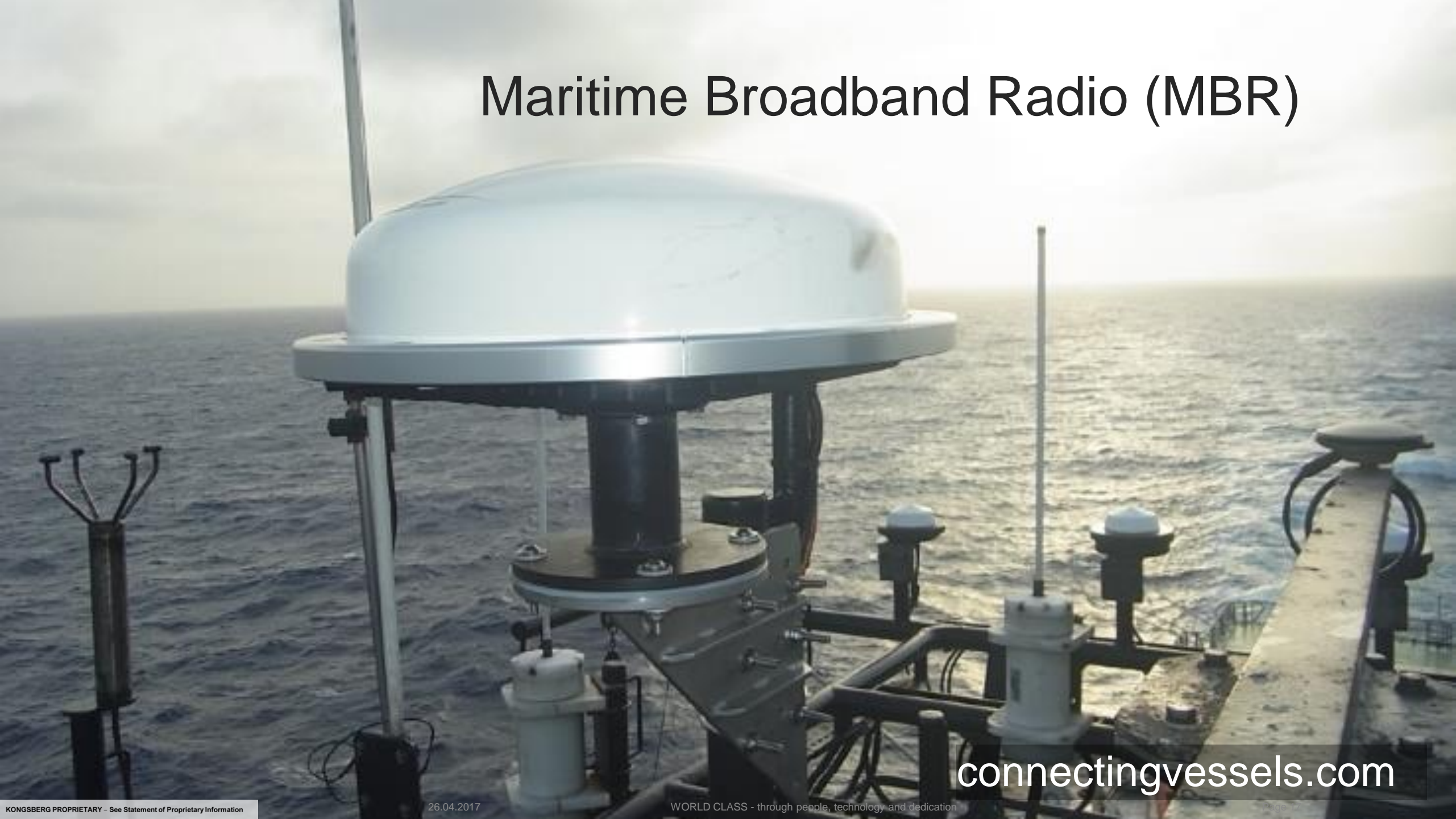
Maritime Communication

Problem

- Obstructions
- Object in signal path



Maritime Broadband Radio (MBR)

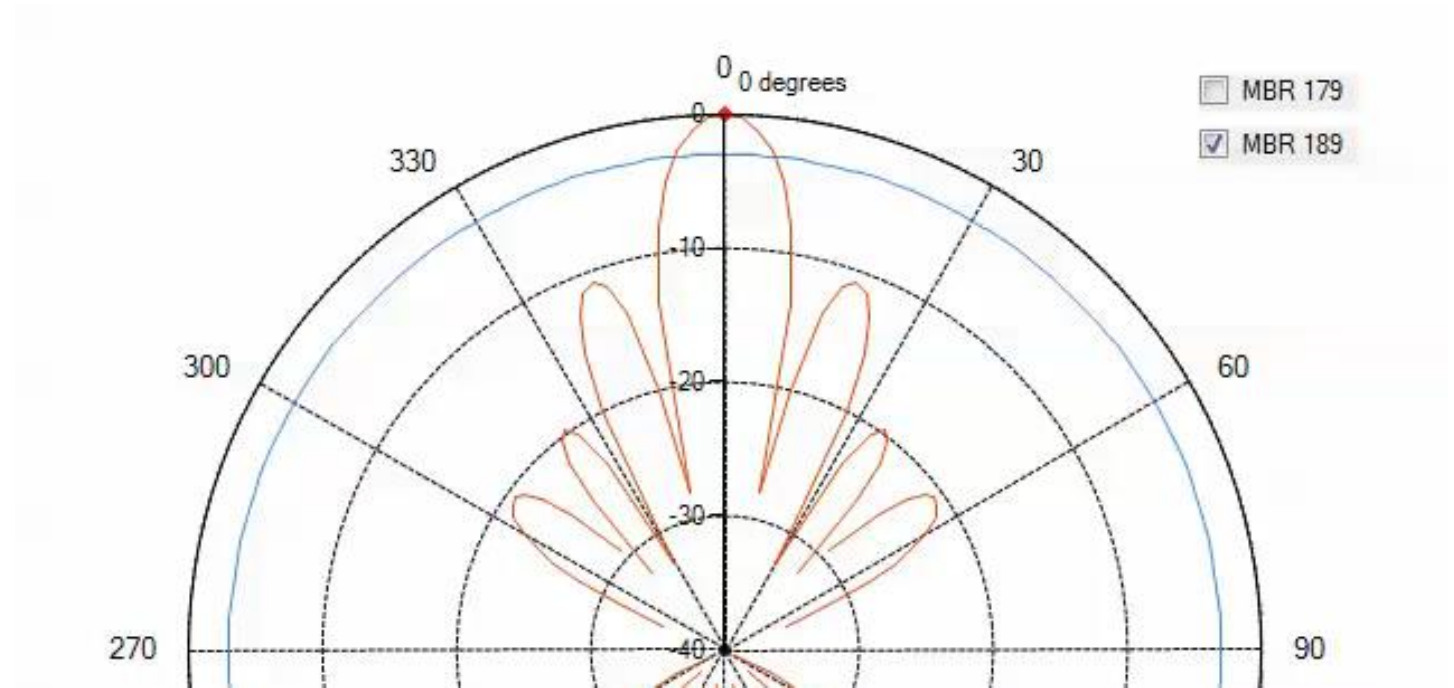


connectingvessels.com

Long range broadband communication

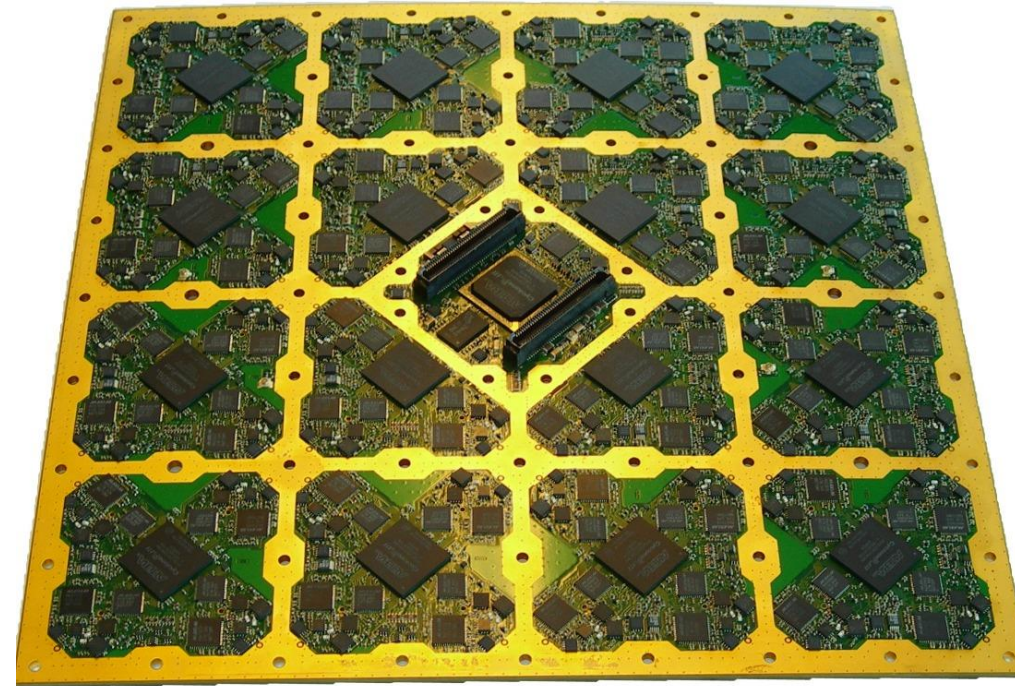
HOW

- Smart antenna design
- No moving parts
- Beamforming



MBR Design – FPGA Technology

- 17 FPGA's with a combined data stream of 40Gbps
- Real-time signal processing
- 60 independent transceivers
- Fail tolerant design



Facts and numbers



IP- based data networking



15 Mbps Payload



Point to point and point to multipoint

Beyond Line-Of-Sight



Deterministic Latency

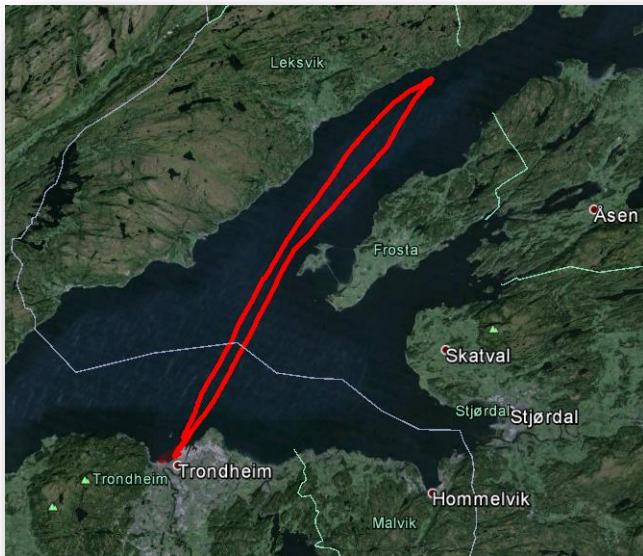
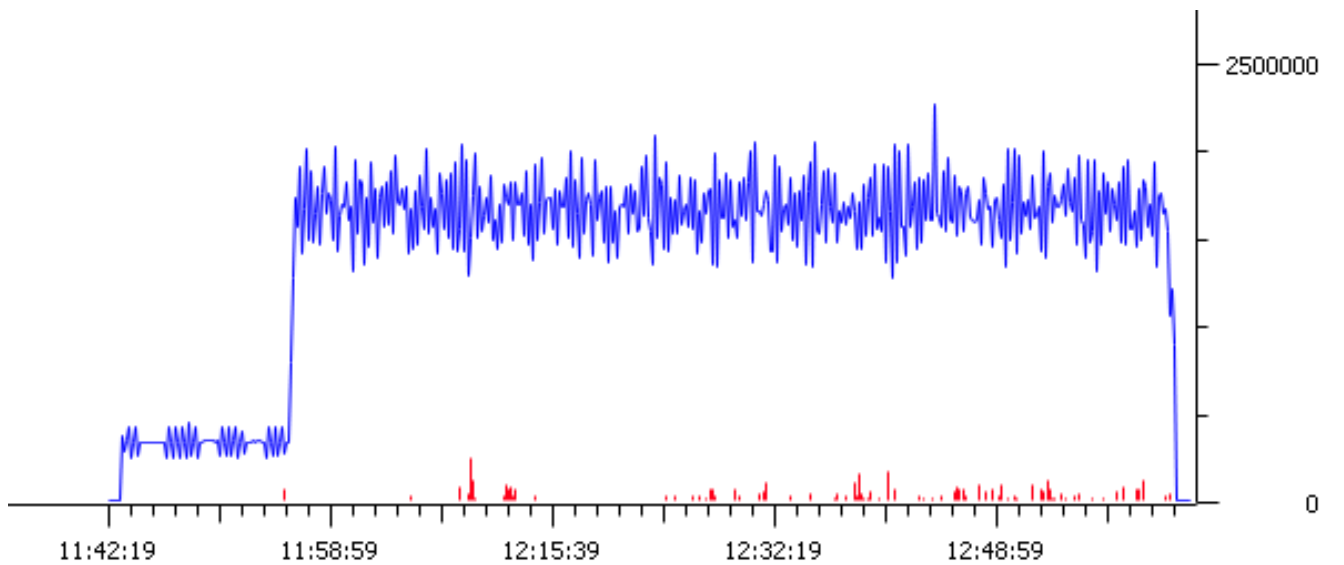
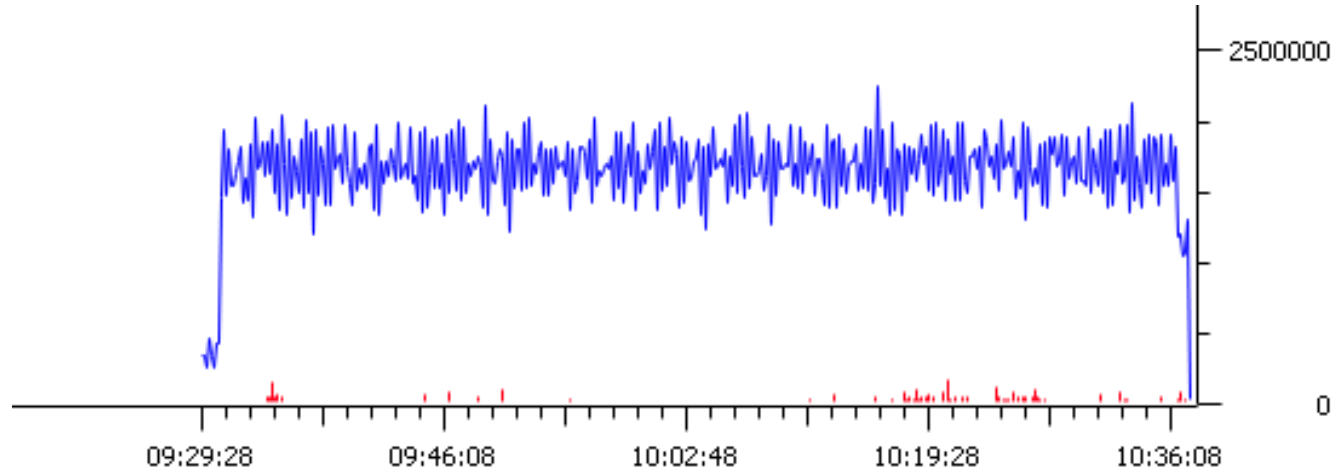


connectingvessels.com

Reliable data transfer

PROOF

- Orca data (TCP)
- **TCP retransmission**



PROOF

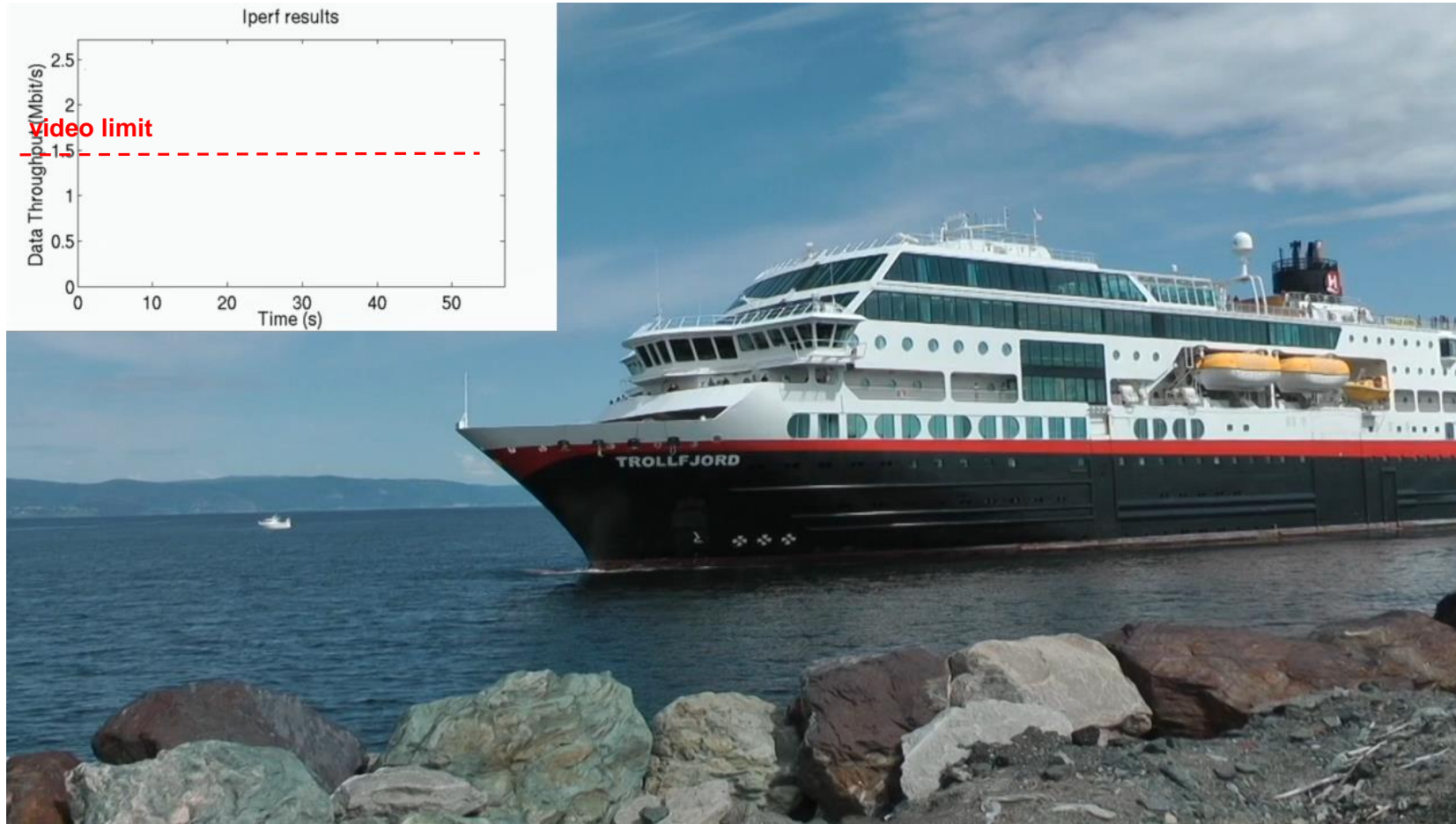
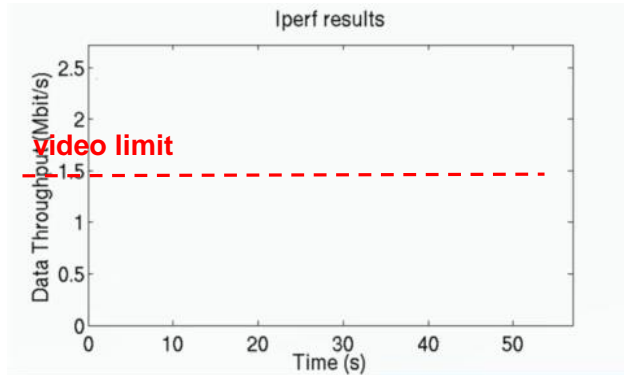
Throughput test in difficult conditions



KONGSBERG

2 Mbps

1 Mbps



Autonomy



KONGSBERG



Enabling technologies for Autonomy

Sensors
Surroundings
Condition monitoring



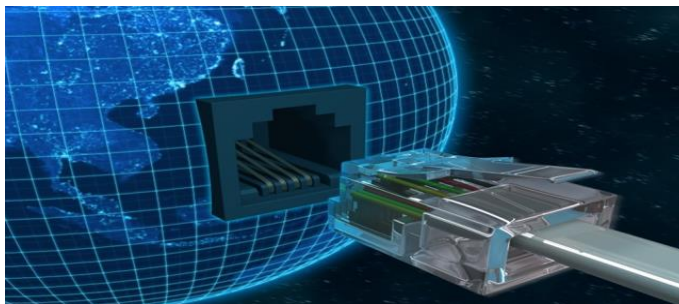
Cognition
Planning, learning and
adaption

Perception
Analysis of signals
and data
Generate proximity
awareness



**Localization and
mapping**
Relative
positioning
Wider environment

Communication
Secure

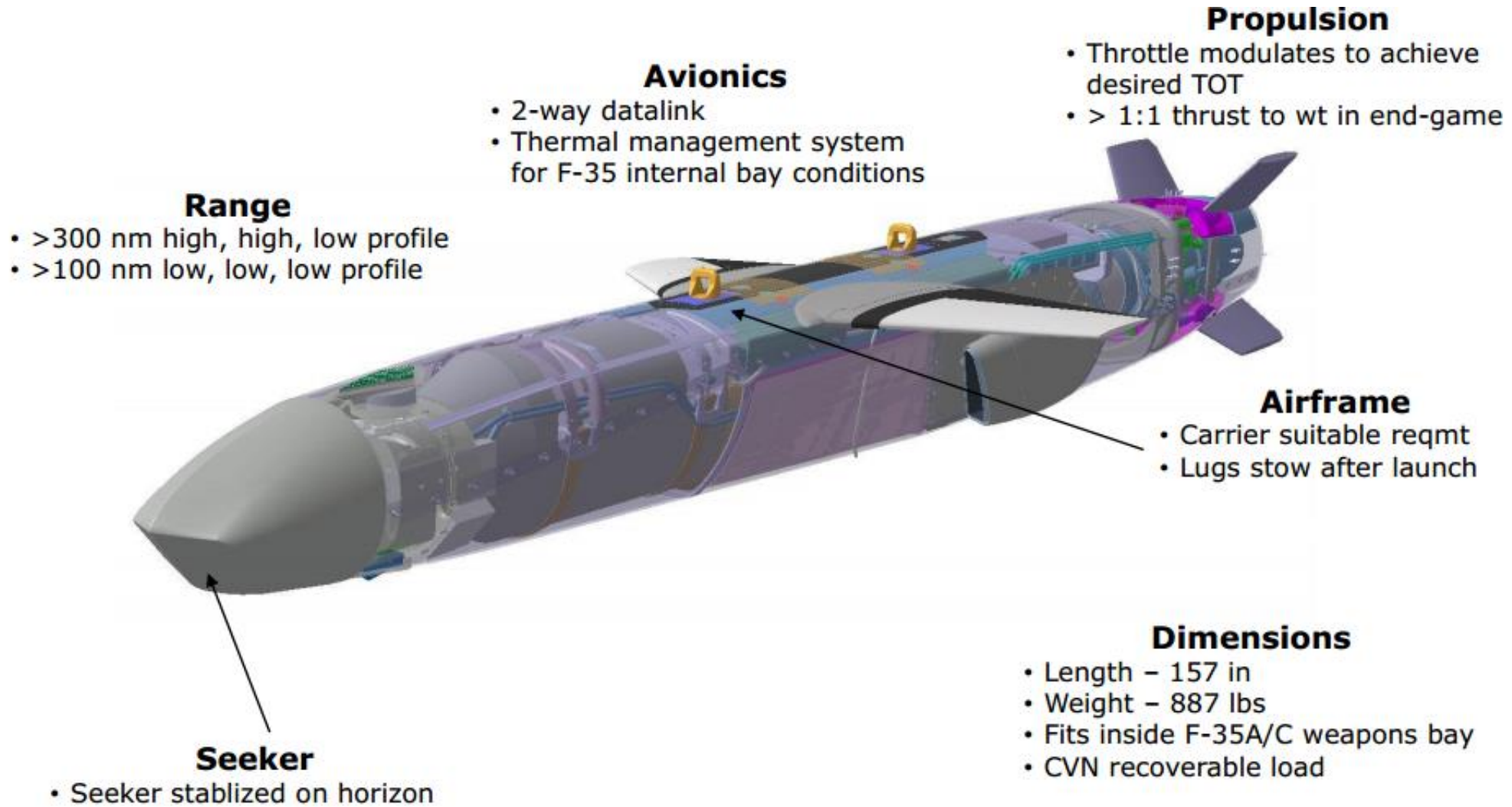


**Human-Machine
Interaction**
Remote control
Man in the loop

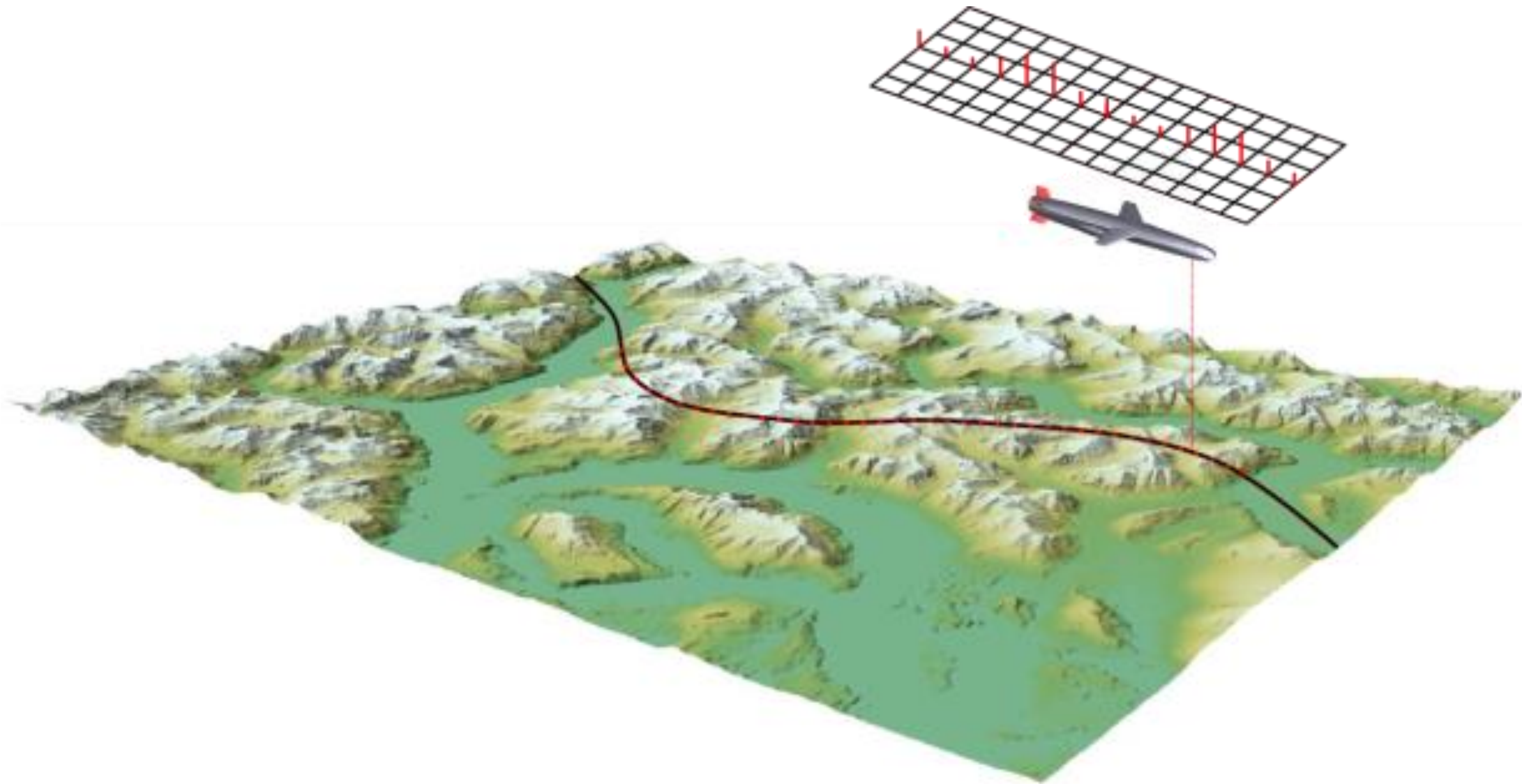
JSM Missile Attributes



KONGSBERG



NSM/JSM Navigation System



HUGIN AUV



KONGSBERG

Dynamic Positioning – a level of autonomy

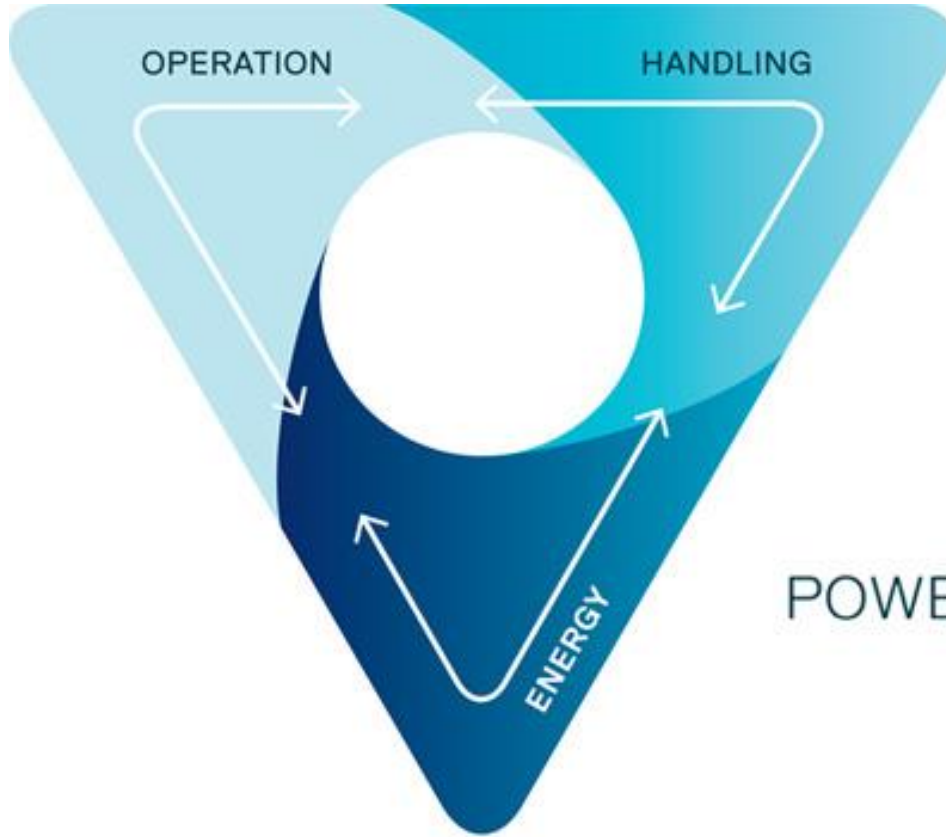


KONGSBERG



eBird





It's all about
INTEGRATION
POWERED BY KONGSBERG



KONGSBERG

WORLD CLASS

THROUGH PEOPLE, TECHNOLOGY AND DEDICATION